

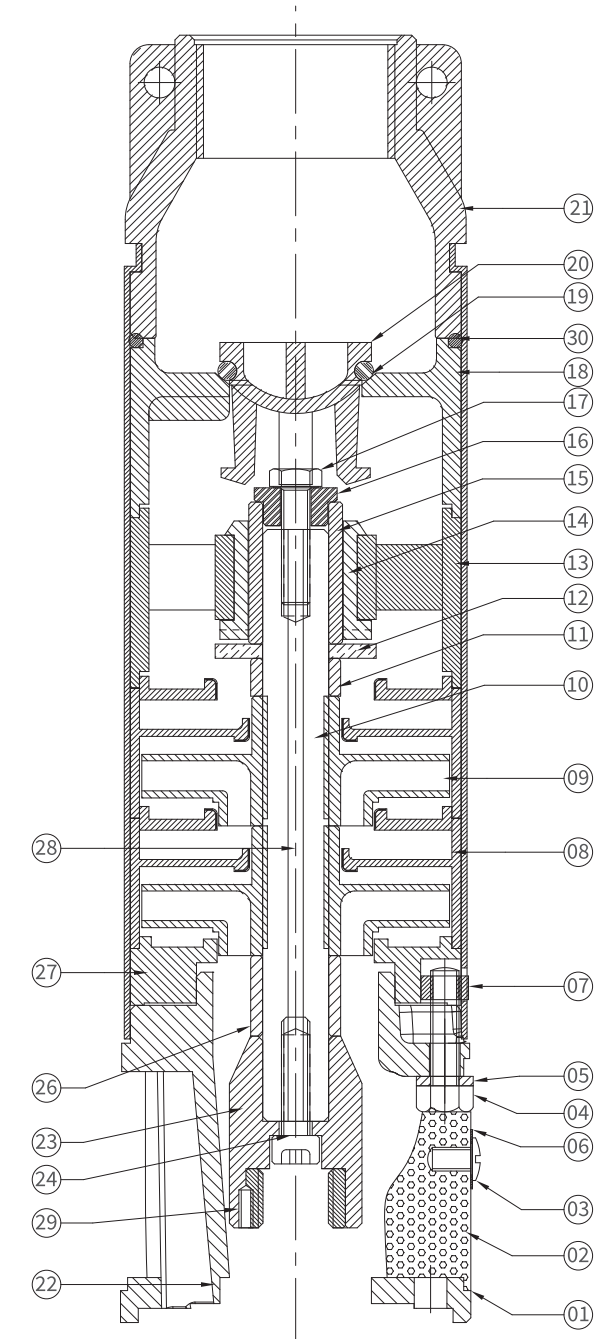
3RPR 300, 3RPR 30A & 3RPR 300H SERIES PUMP DESIGN

SPECIFICATIONS & ADVANTAGES:

1. 3" Raindrop Multistage Centrifugal Pumps are robust, compact and highly efficient.
2. Suction and discharge outlets are made of cast iron with nickel coating, with a look of steel finish.
3. Impellers and diffusers are of special engineering resins to withstand wear resistance to sand.
4. Pump casing is of PPO 20% GF.
5. Pump shaft is made of Stainless Steel.
6. Hexagonal Rubber Bearing Bush and Hard Chrome Sleeves help in long lasting performance.
7. Efficient and Newly designed Non Return Valve (NRV).
8. Cable Guard and Strainer of Stainless Steel.
9. Operating range :
Head range - 2 mtr to 135 mtr
Flow rate - 9 lpm to 108 lpm
Immersion - 1 mtr minimum
10. Maximum level of sand content : 50 gm/m³.
11. Application : These pumps are for domestic, agriculture & industrial usage.

Material Specification

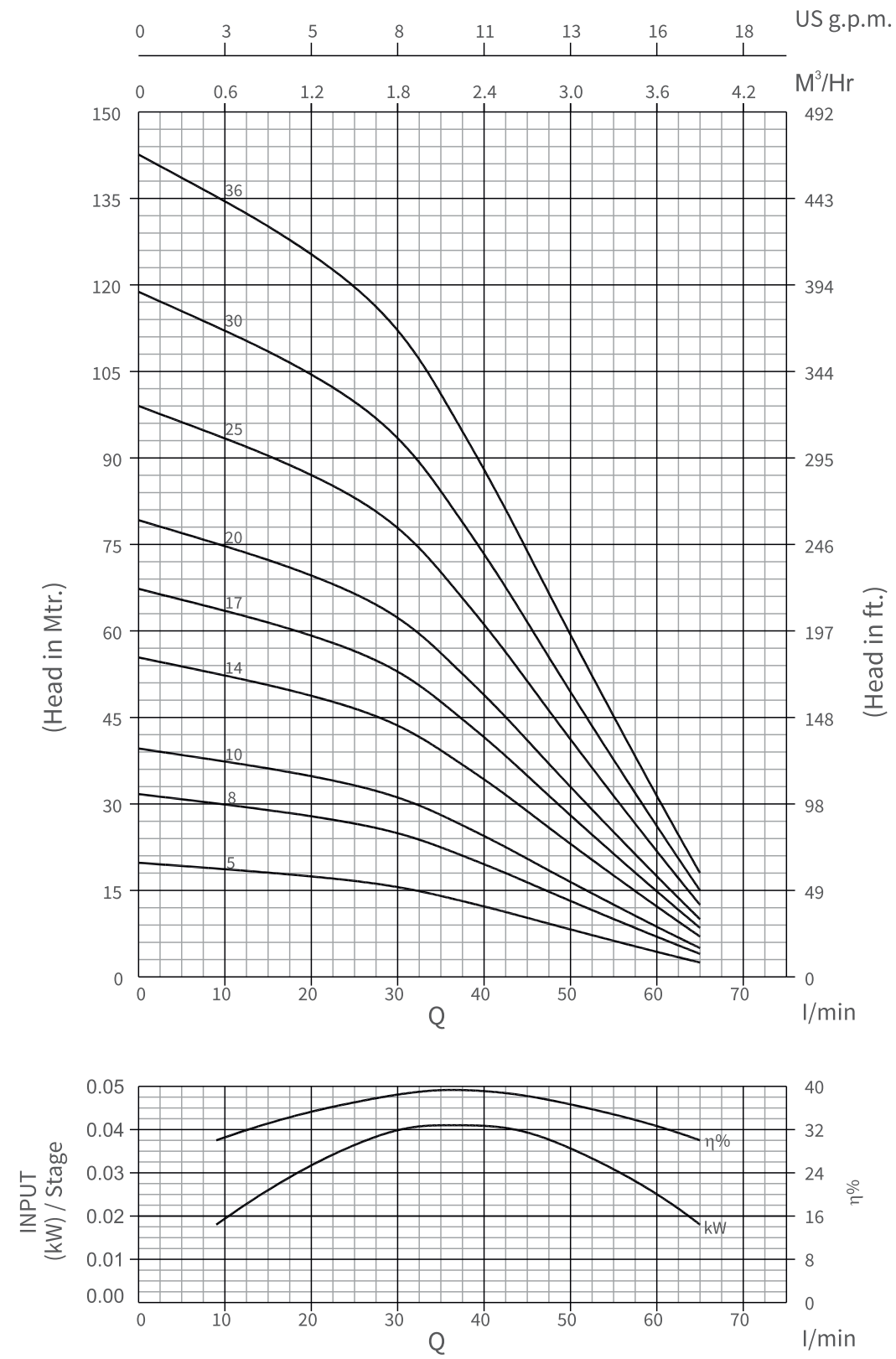
NO	PART'S NAME	MATERIAL
1	SUCTION	C.I.(F.G.200)
2	STRAINER	S.S.202
3	SCREW (USE FOR STRAINER)	S.S.304
4	HEX BOLT (USE FOR SUCTION)	S.S.304
5	SPRING WASHER	S.S.304
6	WASHER (USE FOR STRAINER)	S.S.304
7	SQUARE NUT	S.S.304
8	BOWL	P.P.O.(20% G.F)
9	IMPELLER	P.P.O.(20% G.F)
10	PUMP SHAFT	S.S.410
11	DISTANCE SLEEVE	P.P.O.(20% G.F)
12	THRUST PLATE	S.S.202
13	D.O.L.	P.P.O.(20% G.F)
14	D.O.L.RUBBER BUSH	N.B.R
15	D.O.L SLEEVE	S.S.410
16	TOP COLLER	S.S.410
17	HEX BOLT	S.S.410
18	D.O.L N.R.V	P.P.O.(20% G.F)
19	N.R.V.CONE 'O' RING	N.B.R
20	N.R.V CONE	NYLON
21	N.R.V.(WITH PUMP PIPE)	C.I.(F.G.200)/S.S.202
22	SUCTION NECKRING	S.S.202
23	COUPLING (EXPORT)	S.S.304
24	ALLEN BOLT	S.S.304
25	KEY (SUCTION SIDE)	S.S.304
26	SLEEVE (USE FOR SUCTION)	P.P.O.(20% G.F)
27	SUCTION PLATE	P.P.O.(20% G.F)
28	KEY	S.S.304
29	GRUB SCREW	S.S.304
30	O' RING	NBR



Performance Curves

3RPR 300, 60Hz

ISO 9906 Annexure A



Performance Chart

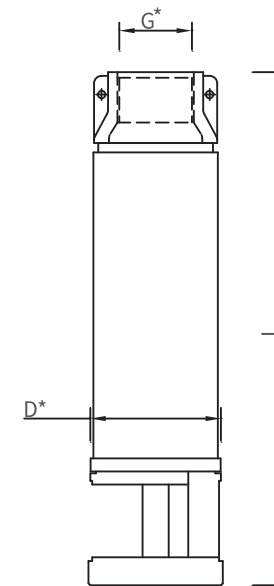
3RPR 300, 60Hz

ISO 9906 Annexure A

MODEL NAME	STAGE	RATING		DISCHARGE	DISCHARGE												
		kW	HP		l/min	0	9	16	26	32	36	42	48	60	65		
SINGLE PHASE				m³/h	0	0.54	0.96	1.56	1.92	2.16	2.52	2.88	3.6	3.9			

MODEL NAME	STAGE	kW	HP	HEAD IN Mtrs.	20	19	18	17	15	14	12	9	4	2
3RPR 300-05	5	0.37	0.50	20	19	18	17	15	14	12	9	4	2	
3RPR 300-08	8	0.75	1.00	32	30	29	26	24	22	18	14	7	4	
3RPR 300-10	10	0.75	1.00	40	38	36	33	30	27	23	18	9	5	
3RPR 300-14	14	1.10	1.50	55	53	50	46	42	38	32	25	12	7	
3RPR 300-17	17	1.10	1.50	67	64	61	56	51	47	39	31	15	8	
3RPR 300-20	20	1.50	2.00	79	75	72	66	60	55	46	36	17	10	
3RPR 300-25	25	1.50	2.00	99	94	90	83	76	68	58	45	22	12	
3RPR 300-30	30	1.50	2.00	119	113	108	99	91	82	69	54	26	15	
3RPR 300-36	36	1.50	2.00	143	135	130	119	109	98	83	65	31	18	

Dimensions & Weights



Model name	Specification			
	*D (mm)	L (mm)	Pump Weight(kg)	Weight (incl.pkg)(kg)
3RPR 300-05	80	338	2.0	4.0
3RPR 300-08	80	413	2.5	4.5
3RPR 300-10	80	463	3.0	5.0
3RPR 300-14	80	563	3.5	5.5
3RPR 300-17	80	638	3.5	5.5
3RPR 300-20	80	713	4.0	6.0
3RPR 300-25	80	838	4.5	6.5
3RPR 300-30	80	963	5.0	7.0
3RPR 300-36	80	1113	5.5	7.5

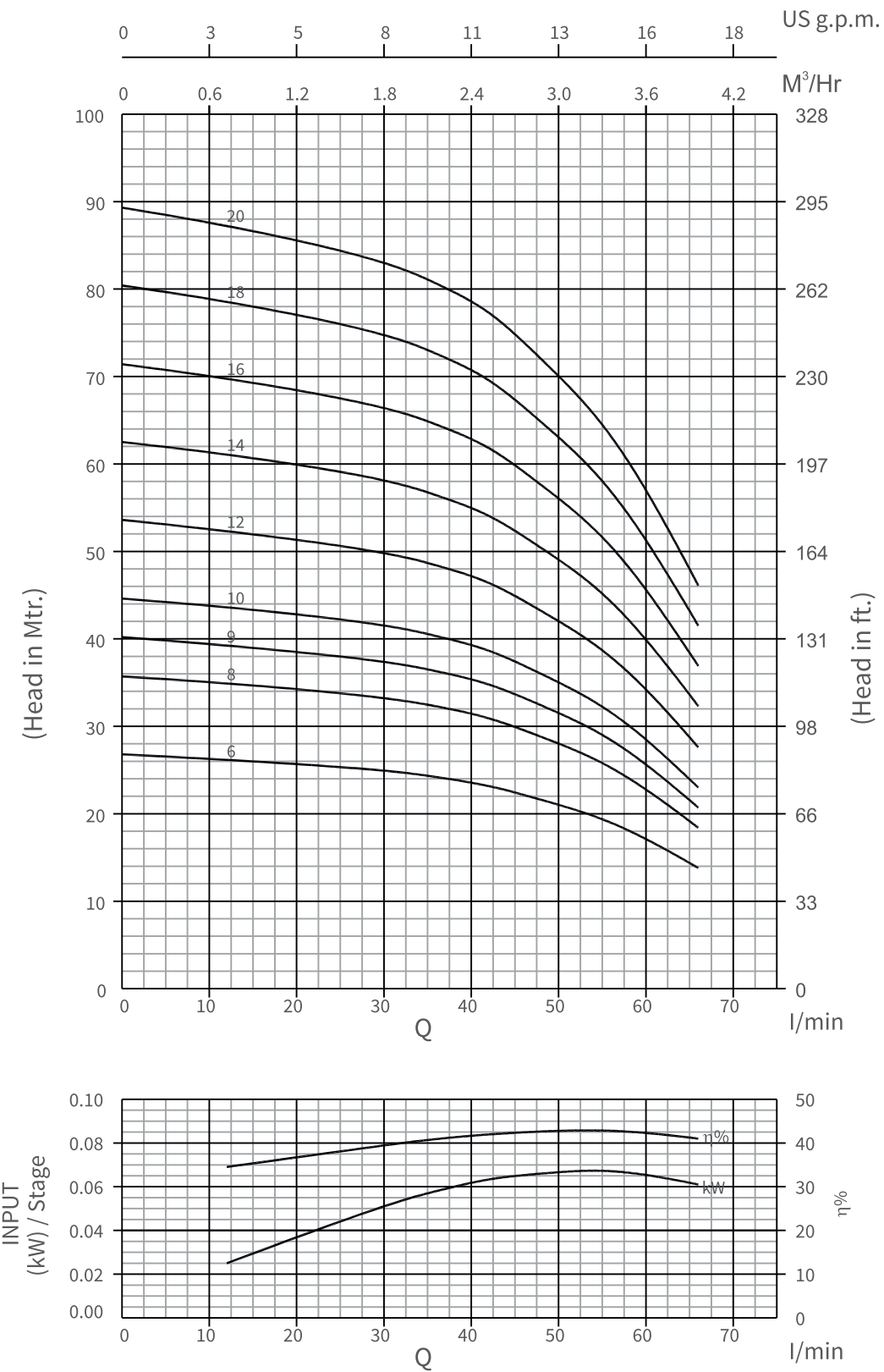
*G: Available Outlet Size 1" & 1.25"

*D: With Cable Guard

Performance Curves

3RPR 30A, 60Hz

ISO 9906 Annexure A



Performance Chart

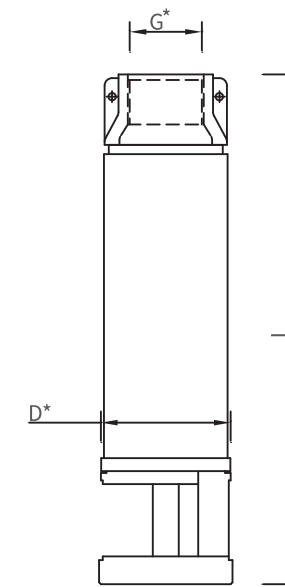
3RPR 30A, 60Hz

ISO 9906 Annexure A

MODEL NAME	STAGE	RATING		l/min m³/h	DISCHARGE										
		kW	HP		0	12	30	36	42	48	54	60	66		
SINGLE PHASE					0	0.72	1.80	2.16	2.52	2.88	3.24	3.60	3.96		

MODEL NAME	STAGE	RATING kW	RATING HP	HEAD IN Mtrs.	27	26	25	24	23	22	20	17	14
3RPR 30A-06	6	0.75	1.00		27	26	25	24	23	22	20	17	14
3RPR 30A-08	8	0.75	1.00		36	35	33	32	31	29	26	23	18
3RPR 30A-09	9	0.75	1.00		40	39	38	36	35	32	30	26	21
3RPR 30A-10	10	1.10	1.50		45	44	42	40	39	36	33	29	23
3RPR 30A-12	12	1.10	1.50		54	52	50	48	47	43	40	35	28
3RPR 30A-14	14	1.50	2.00		62	61	58	56	54	50	46	40	32
3RPR 30A-16	16	1.50	2.00		71	70	67	65	62	58	53	46	37
3RPR 30A-18	18	1.50	2.00		80	79	75	73	70	65	60	52	41
3RPR 30A-20	20	1.50	2.00		89	87	84	81	78	72	66	58	46

Dimensions & Weights



Model name	Specification			
	*D (mm)	L (mm)	Pump Weight(kg)	Weight (incl.pkg)[kg]
3RPR 30A-06	80	380	2.5	4.5
3RPR 30A-08	80	436	3.0	5.0
3RPR 30A-09	80	463	3.0	5.0
3RPR 30A-10	80	491	3.0	5.0
3RPR 30A-12	80	547	3.0	5.0
3RPR 30A-14	80	602	3.5	5.5
3RPR 30A-16	80	658	3.5	5.5
3RPR 30A-18	80	714	4.0	6.0
3RPR 30A-20	80	769	4.0	6.0

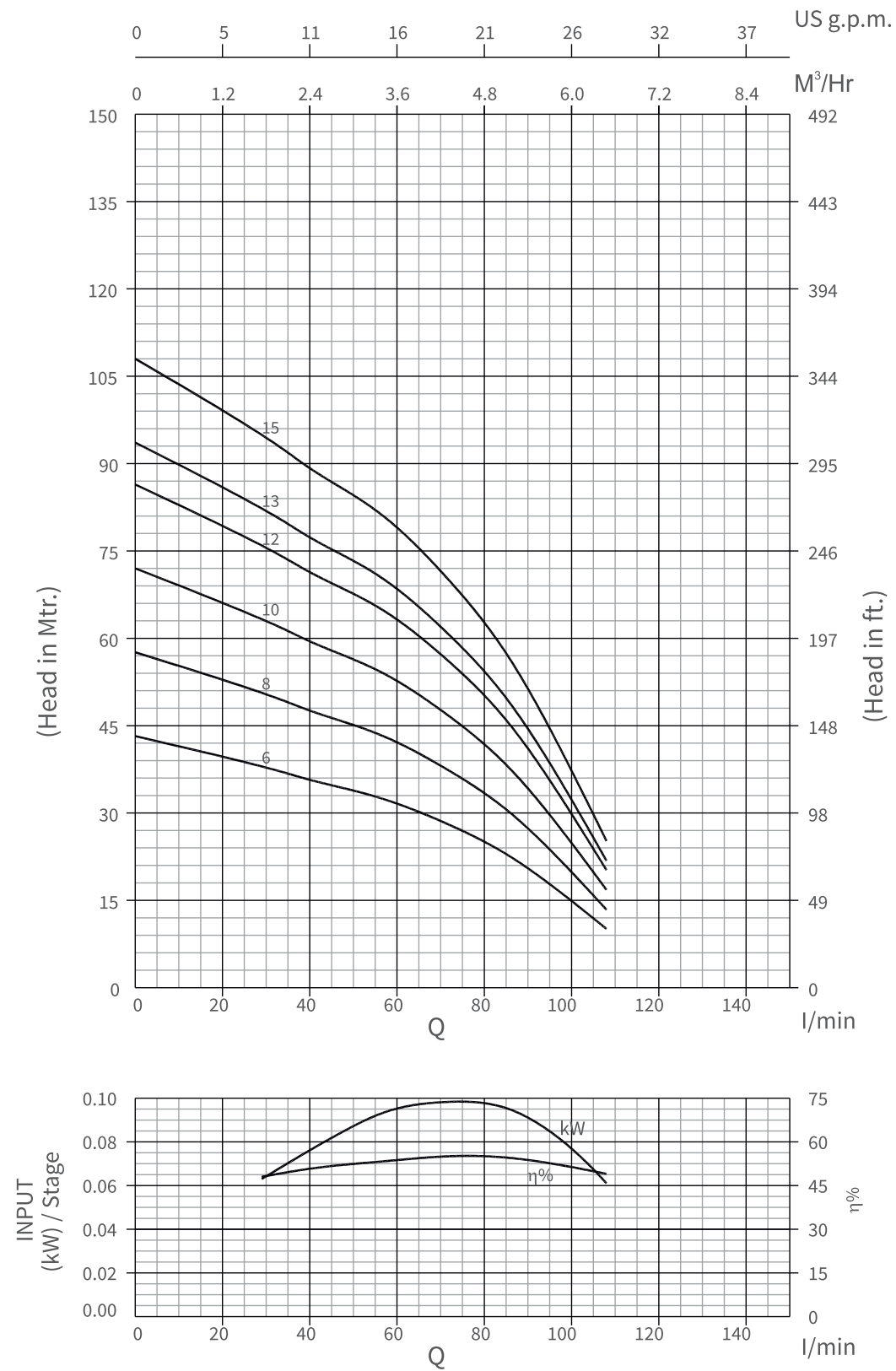
*G: Available Outlet Size 1" & 1.25"

*D: With Cable Guard

Performance Curves

3RPR 300H, 60Hz

ISO 9906 Annexure A



Performance Chart

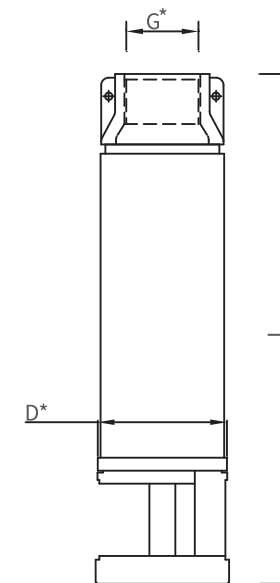
3RPR 300H, 60Hz

ISO 9906 Annexure A

MODEL NAME	STAGE	RATING		DISCHARGE									
SINGLE PHASE		kW	HP	l/min	0	29	38	46	58	72	86	101	108
				m³/h	0	1.74	2.28	2.76	3.48	4.32	5.16	6.06	6.48

MODEL NAME	STAGE	kW	HP	HEAD IN Mtrs.	43	38	36	35	32	28	23	14	10
3RPR 300H-06	6	0.75	1.00		58	51	48	46	43	37	31	19	13
3RPR 300H-08	8	1.10	1.50		72	64	60	58	54	47	38	24	17
3RPR 300H-10	10	1.50	2.00		86	76	72	69	65	56	46	29	20
3RPR 300H-12	12	1.50	2.00		94	83	78	75	70	61	50	31	22
3RPR 300H-15	15	1.50	2.00		108	95	90	86	81	70	58	36	25

Dimensions & Weights



Model name	Specification			
	*D (mm)	L (mm)	Pump Weight(kg)	Weight (incl.pkg)[kg]
3RPR 300H-06	80	382	2.5	4.5
3RPR 300H-08	80	437	3.0	5.0
3RPR 300H-10	80	492	3.0	5.0
3RPR 300H-12	80	547	3.5	5.5
3RPR 300H-13	80	575	3.5	5.5
3RPR 300H-15	80	630	4.0	6.0

*G: Available Outlet Size 1" & 1.25"

*D: With Cable Guard